

RWM Casters Spring Newsletter

June 2016

In This Issue

Spring at RWM

With Spring coming to a close, RWM is busier than ever! Spring was a full season of new product launches and tradeshow. We are excited to be able to showcase several new products launched in the past few months as well as a behind the scenes look at our recent video production. In addition to wrapping up an eventful trade show season, the Spring Newsletter includes our latest news, product innovations, and features including:

- New RWM RK-48 Series
- The Modex Tradeshow
- New Hire
- RWM Video Production
- **New CAD Models COMING SOON!**
- RWM Blog
- Product Highlight: GT Wheel

- New RK-48 Hybrid Series
- Modex Show Recap
- New Hire
- Behind the Scenes: Video Production
- **COMING SOON!**
- RWM Blog
- Product Highlight

Introducing the New RK-48 Series



RWM's Rol Kleen Casters are designed to reduce the amount of fiber build up and time required to service casters used in this demanding application. RWM now offers the RK-48 Series caster, which combines the RK Series caster design with the Freedom 48 Series' completely maintenance free raceway. With this raceway, the RK-48 does not require periodic grease maintenance and offers ultra-quiet operation. Together, in the RK-48 Series, these features produce a product that is designed for ease of movement, noise reduction and a 50% reduction of thread build up in all applications where minimizing the occurrence of fiber deposits wrapping around axles is beneficial.

Product Features:

- Sealed precision swivel bearing
- Zinc-plated to protect against corrosion
- Fits up to 2" wide wheels
- Precision fitting full wheel thread guards to reduce fiber build-up around the wheel.

Capacities up to 500lbs

The Modex Trade Show



RWM was recently in attendance at the Modex 2016 Tradeshow in Atlanta, Georgia from April 4-7th. The RWM Team had a great time talking with those attendees who visited our booth. While there, we featured some of our new products such as: the RWM 58 Series, the RK-48 Series, the Adjustable Floor Lock and our new L type swivel lock options. We received some great interest and feedback from new prospects and appreciate all of you who invested the time to stop by.

New Customer Service Representative

We are pleased to announce the addition of Matt Turney to our Customer Service Department. A Gastonia native, Matt is a graduate of the University of North Carolina at Charlotte and holds a degree in Sociology. Joining RWM with previous experience in engineering, we are excited to have Matt on board with RWM and the Customer Service team.

customerservice@rwmcasters.com

704-866-8533



Behind the Scenes: RWM's New Video Production



At RWM, we pride ourselves in manufacturing topline products that work for the applications of our core customers. From concept to creation, we are engineered to outperform. Recently, RWM partnered with a local film company to shoot a video showcasing RWM's process from concept to product.

Entitled "From Concept to Creation," the video takes viewers through our facilities and provides them with a first-hand view of RWM's engineering, manufacturing, and testing which transforms raw materials into lasting products.

This video can be accessed on our website under our company blog and on our YouTube page under "RWM Casters: From Concept to Creation."

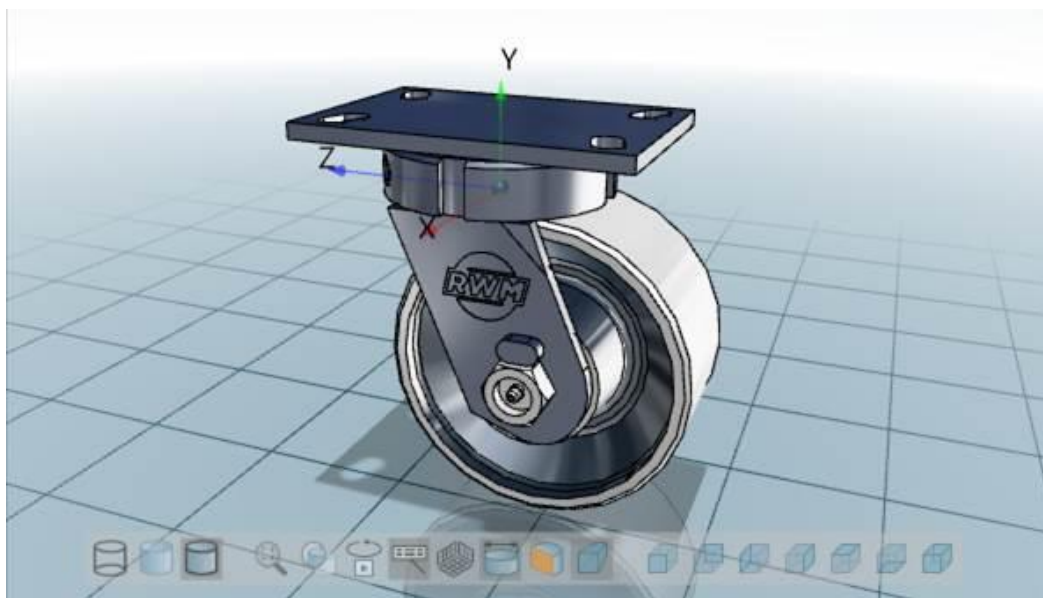
Above and to the left, the film crew shoots on site at RWM with the help of Marketing Assistant Kurt Ferreira and Regional Manager Mike Twitty.



[Click Here to Watch RWM's Video](#)

COMING SOON!

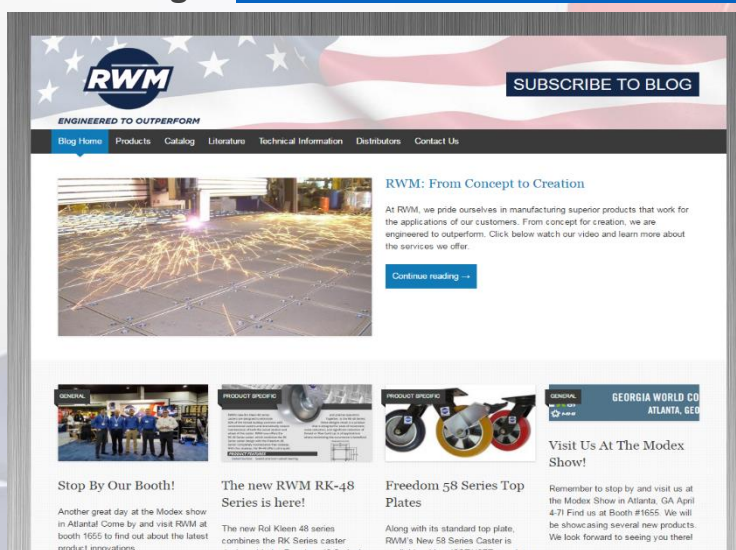
Thousands of New CAD Model Downloads



RWM will be updating and expanding upon the CAD Models on our website! There will be thousands of options added and a new enhanced system for our website to better drive sales and hot leads. Be sure to keep an eye out for the new and improved CAD models in the near future.

Don't Forget to Follow Our Blog!

RWM Caster's blog has recently been updated with new publication, and major events that take place within the company. It has been incorporated into our main website and is now easier to navigate, subscribe and follow. Each post contains photographs and links to PDFs or pages with the newest content. Follow our blog at <http://rwmcasters.wordpress.com>.



Product Highlight: GT Wheel

RWM's molded GT wheel leads the industry in reducing push pull forces, eliminating maintenance and improving long term durability. The GT wheel is constructed of a special blend of reinforced material which enables it to shoulder substantial loads and handle abuse most other wheels can't. A great option for manually handled work tables to ensure the lowest possible effort required to move and is used heavily on production tow lines where continuous use has led to failure of other materials.



Additionally, since the GT is maintenance free and of solid molded construction it has been a go to for environments requiring steam and chemical wash. This wheel is known to last and has been a major success for many of our partners and end customers. The GT Wheel is proudly Made in the U.S.A. Want to know more? Contact your regional representative and ask them how this wheel has changed the market.



ENGINEERED TO OUTPERFORM

1225 Isley Drive, Gastonia, NC 28052/ 1-800-634-7704/ customerservice@rwmcasters.com