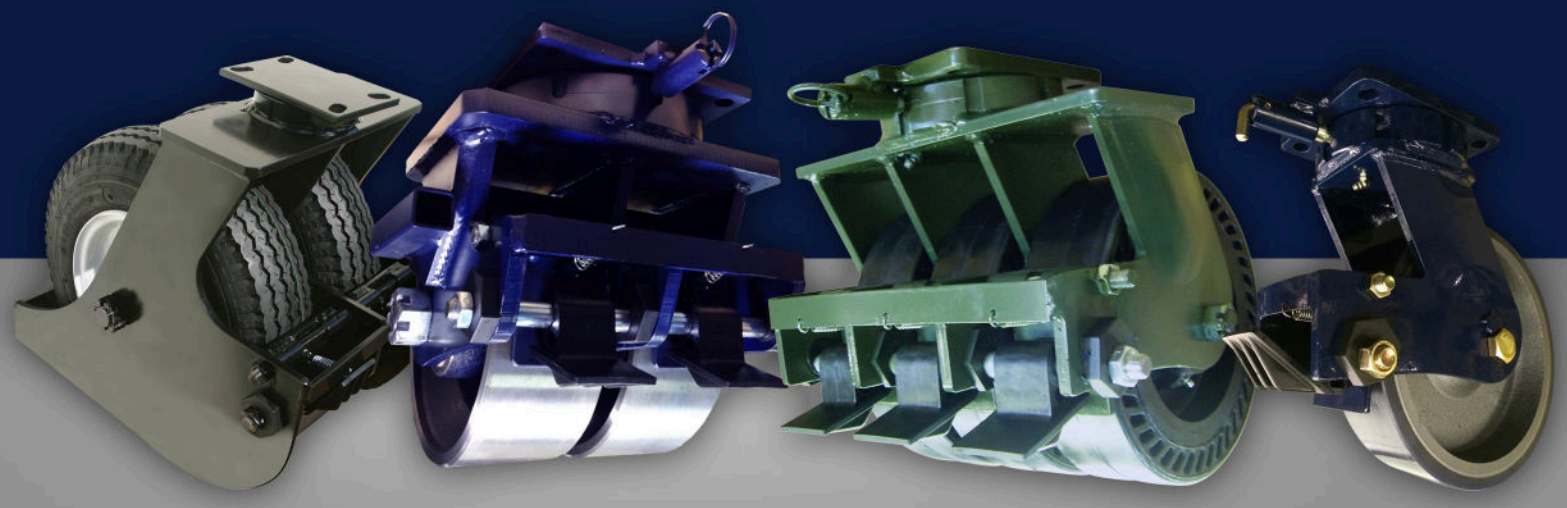




AEROSPACE

RWM **PRODUCTS**



KINGPINLESS CASTERS

As a leading U.S. manufacturer of industrial casters as well as being the originator and market leader in Kingpinless casters, RWM Casters primary mission is to continue developing and manufacturing high value products, including those products capable of enduring heavy usage in the aerospace industry.

RWM is proud to be one of the largest domestic manufacturers of heavy duty industrial caster and wheel products. At RWM the engineering is complex, but the goal is simple: to build unsurpassed performance, unmatched durability, unequaled longevity and unerring applicability... into every product we make.



65 Series (Up to 2,000 lbs.)

The Kingpinless™ 65 Series Caster is a medium-duty design suited for demanding applications such as towlines, assembly lines, tooling, ground support and various heavy duty industrial applications. It extends service life and reduces possible causes for caster failure. Custom designs are available and CAD can be found on our website.



76 Series (Up to 7,000 lbs.)

The Kingpinless™ 76 Series Caster is excellent for heavy duty applications. It offers up to 7000 lbs. capacity. It is a great option for towing operations, assembly, larger tooling, ground support and, heavy-duty applications that demand a superior product. Custom designs are available and CAD can be found on our website.



95 Series (Up to 20,000 lbs.)

RWM's Kingpinless™ 95 Series Caster is designed for demanding situations. The 95 Series offers a capacity of up to 20,000 pounds with a wide variety of heavy duty wheels to maximize capacity. Some applications for the 95 Series include dollies, utility carts, maintenance stands, assembly production and many more applications. Custom designs are available and CAD can be found on our website.



125 Series (Up to 40,000 lbs.)

RWM's 125 Series features the patented Kingpinless™ caster design. The 125 Series offers capacity up to 40,000 pounds. Some of the typical applications include ground support equipment, die carts and aircraft engine stands. ½", or greater, construction adds extra strength and durability to the caster. Custom designs are available and CAD can be found on our website.

KINGPINLESS CASTERS



2-65 Series (Up to 2,000 lbs.)

RWM's 2-65 Series Kingpinless™ Dual Wheel Casters feature all of the benefits of our patented raceway. There are different options of wheels that can be applied to the 2-65 Series dual casters depending on the application.



2-76 Series (Up to 7,000 lbs.)

The 2-76 Kingpinless™ Dual Wheel Caster offers high weight capacity with minimal overall heights, better load distribution, floor protection and mobility.



2-95 Series (Up to 20,000 lbs.)

The 2-95 Series offers the benefits of the patented Kingpinless™ raceway design. Dual Wheel Casters are ideal for tow lines, shock load applications and abusive conditions in addition to having twice the weight capacity of the single wheel casters of the same series.



2-125 Series (Up to 40,000 lbs.)

The Kingpinless™ 2-125 Series is the biggest Dual Wheel Caster. It can withstand loads up to 40,000 lbs. These casters can be used for aerospace, heavy machinery and equipment, air cargo and ground support equipment just to name a few. They can handle extra heavy duty applications easily. Designs for higher capacity and special applications are available.



Shock Absorbing Series (Up to 18,000 lbs.)

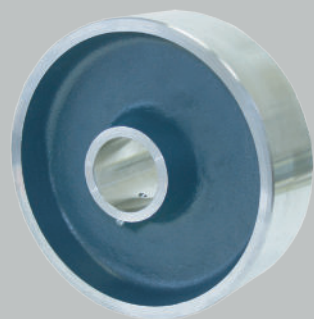
RWM's SA Shock Absorbing Casters reduce the stress placed on wheels and rigs due to the spring mounts on the rig. These spring mounts isolate shock and vibration from rough surfaces to protect equipment. The Shock Absorbing Casters feature either vertical mount springs, outside mount springs or inside mount springs. Custom designs are available.



Pneumatic Caster (Up to 7,260 lbs.)

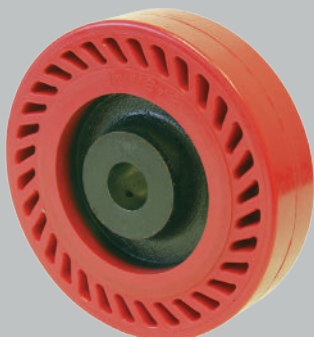
RWM's Pneumatic Casters are designed for applications that require a cushioned ride including carts and trucks carrying sensitive material and parts. Pneumatic casters are also useful on uneven floors and outdoor environments. Pneumatic Casters can be 65, 76, 95, or 125 Series with a variety of mounting plates, heights and designs.

WHEELS



Forged Steel (Up to 20,000 lbs.)

RWM manufactures these wheels by hot forging them from medium carbon steel providing maximum strength and durability. RWM Forged Steel wheels are virtually indestructible within their capacity range. RWM Forged Steel wheels can be used in the roughest, most demanding, abusive applications on the poorest floors under the heaviest loads.



Omega (Up to 2,000 lbs.)

The Omega wheel is developed for towline caster applications within manufacturing plants to provide noise reduction and shock absorbing capabilities through a special web/spoke design. The Omega can travel smoothly over rough surfaces and objects effortlessly. The Omega wheel will provide longer service life, reduce maintenance cost, reduce noise and can carry loads at high speeds smoothly.



Urethane on Aluminum (Up to 1,500 lbs.)

The Urethane on Aluminum wheels roll easier and outlast rubber wheels. The aluminum core will not rust, but can corrode when exposed to certain cleaners and solvents. However, these wheels offer outstanding abrasion resistance, oil, and chemical resistance. In addition, these wheels are non-marking and protects floors.



Urethane on Iron (Up to 9,000 lbs.)

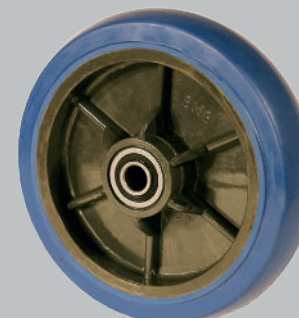
RWM's Urethane on Iron wheels have an iron core that is a heavy duty solid web design with an oversized hub, enabling it to be machined for special bearings or a keyway. They will outlast rubber wheels. In addition, these wheels are non-marking to floors and provide a quiet ride compared to hard tread or steel wheels.



Ultra Thick Urethane (Up to 10,300 lbs.)

The Ultra Thick Urethane wheel's thick tread reduces contact stresses in the polyurethane during high loading and towing. Ultra Thick Urethane wheels provide a softer ride and quiet operation due to the thickness of the tread and are good for towing applications. The urethane tread is non-marking to floors and resistant to abrasion and most chemicals.

WHEELS



RWM Signature Premium (Up to 700 lbs.)

The RWM Signature Premium Wheel has a lightweight, reinforced nylon core with a high strength, non-marking rubber tread. The round tread provides easy rolling. The Signature Premium Wheel is excellent for floor protection, towing and noise reduction.



EHT on Aluminum (Up to 2,280 lbs.)

RWM's Elastomeric High Tensile Non-Marking Rubber Wheels are molded rubber wheels. The rubber is bonded to a lightweight aluminum core. This rubber wheel will not crack, chunk, dry out or debond. These EHT wheels are great for towing applications in both indoor and outdoor environments. They are also quiet and roll easily over debris.



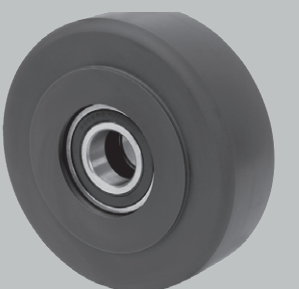
Full Pneumatic (Up to 3,630 lbs.)

Pneumatic Wheels allow a cushioned rollability other wheels cannot provide. They are useful on uneven floors and outdoor environments. Other applications may include platform trucks, luggage carts, material handling carts, warehouse and factory applications and many more. Solid industrial tires are also available for heavier application needs.



GT (Up to 3,400 lbs.)

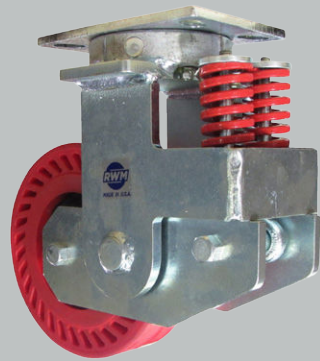
The GT Wheel by RWM Casters is the smoothest and easiest rolling wheel. It can handle heavy loads, traverse both smooth and rough floors and is entirely maintenance free. This makes it ergonomically sound, saving time spent on required maintenance of an inferior product. They are great for continuous use and tow line applications where ergonomics are critical.



Ultron (Up to 16,500 lbs.)

RWM's Nylatron Wheels are extremely durable. These ultra heavy duty wheels are designed for the most severe loads. They have great rollability and do not damage floors like steel or iron wheels. The Nylatron wheel does not chunk or separate under extreme applications. They are resilient against temperature buildup from bearings and friction.

OPTIONS



Custom

If you don't see what you are looking for, we custom manufacture casters to custom specifications that will meet the needs of nearly any application.

Special Finishes

A powder coat finish is offered as a standard on many of our caster series. The powder coat is superior in long-term performance to both liquid paint and standard zinc plate finishes. Type II zinc plate is also available and offers great long-term performance in outdoor environments.

Sealed Raceway (SR)

Raceway seals are available on the majority of our Kingpinless casters. These seals serve to prevent contamination of grease and ensure long-term durability in harsh environments.



(FG) Foot Guards

Foot guards serve as a safety mechanism to prevent casters from rolling over and harming an employee's feet. They also protect wheels from fork lifts.



Sweeper

The sweeper option has a brush attached to the caster rig. The sweeper brush is a great option to keep the wheels clean from debris.

OPTIONS

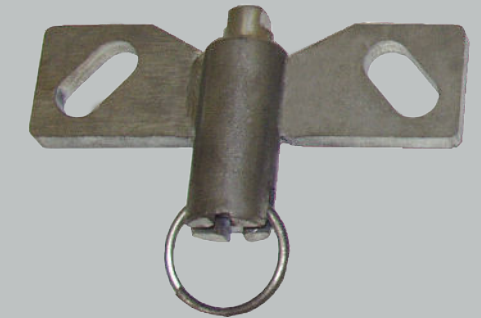
(SL) Swivel Locks:

A multitude of locking mechanisms are offered to prevent the rotation of swivel casters when in use. These include standard offerings such as:

Swivel Lock (SL)

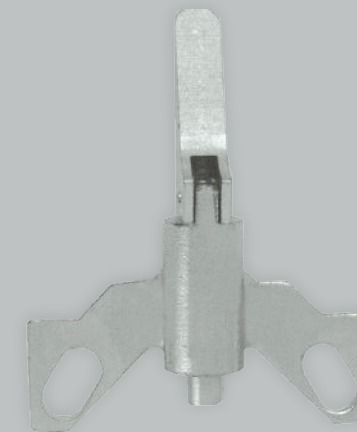


Demountable Swivel Lock (DSL)

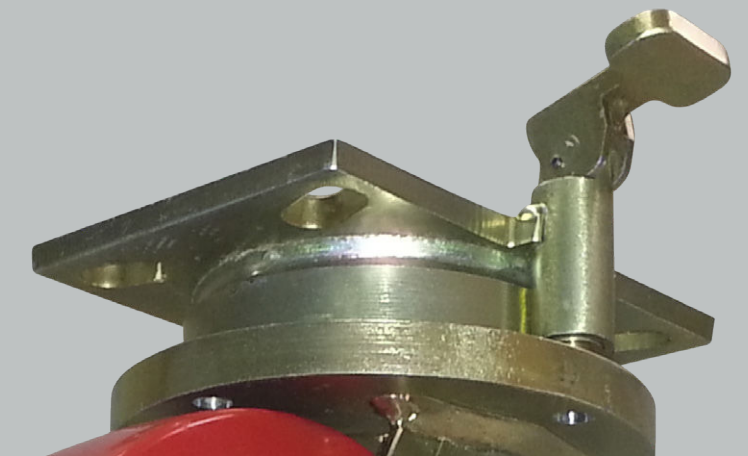


as well as, more specialty locks, such as:

Foot-Operated Swivel Lock (FOSL)

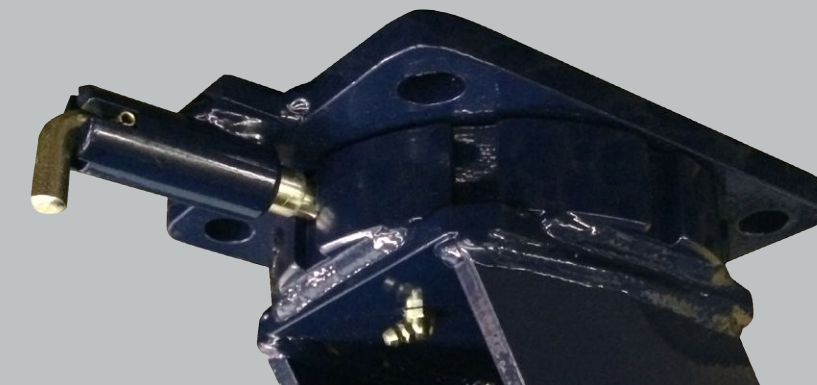


Vertical Swivel Lock (VSL)



L-Type swivel lock (LSL)

A great option for industrial applications.





ENGINEERED TO OUTPERFORM

www.rwmcasters.com

Download CAD models straight from the RWM website

1225 Isley Drive • Gastonia, NC 28052

Phone: 1-800-634-7704 • Fax: 1-800-253-6634